



Morden Leisure Centre

Disabled Access Statement

Rev A

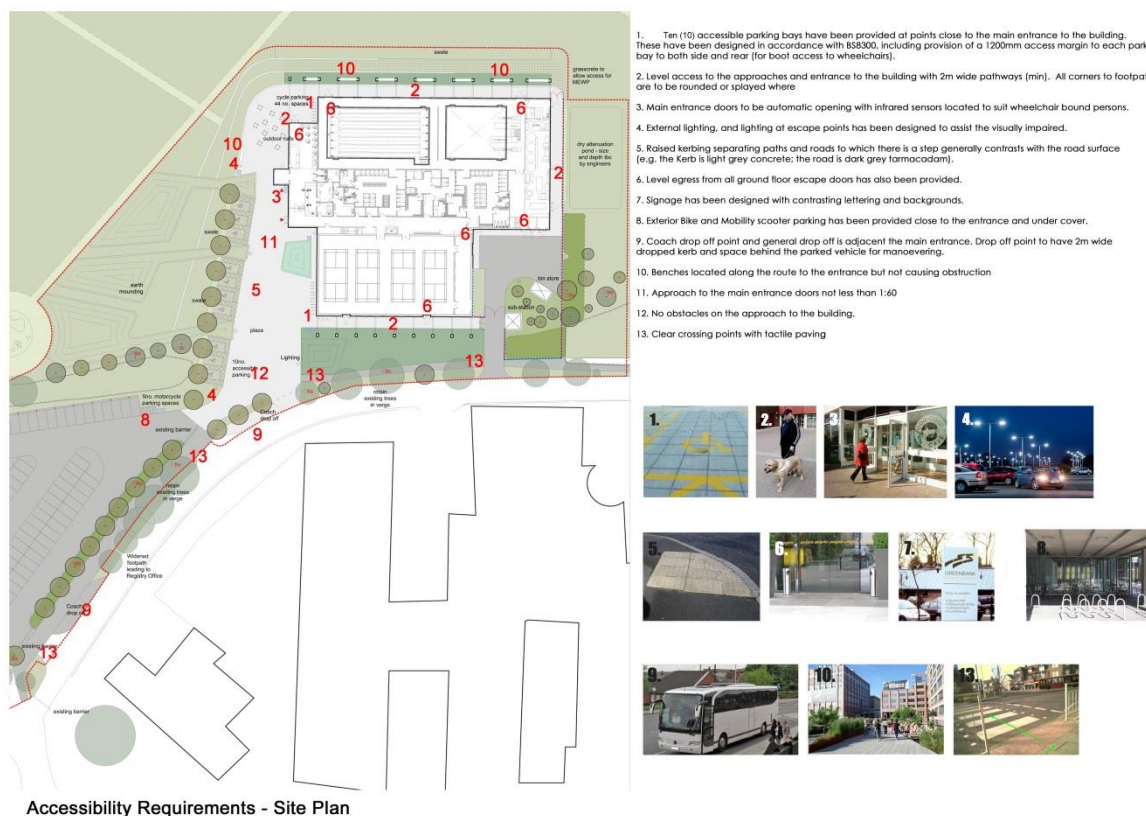
Date: February 2016

Disabled Access Statement for MORDEN LEISURE CENTRE

1.0 DISABLED ACCESS

The Morden Leisure Centre has been designed with care and attention towards those with disabilities, the elderly and children. On the back of the recent Paralympic Games, disability sport in the UK has increased tremendously.

As part of the developing design, we have produced the following boards which indicate some of the fundamental access considerations we are making. Full size sheets of the following boards have been uploaded as separate drawings as part of the planning application submission.



Disabled Access Statement for MORDEN LEISURE CENTRE



1. Automatic opening entrance doors.
2. The reception counter is provided with a dropped section for wheelchair access.
3. Turnstiles where provided have 1200mm access gates for sports wheelchairs and pushchairs to pass.
4. Socket points around both pools will be provided for a hoist if required (PAL).
5. Both pool have been designed to be level deck.
6. The pool water edge will be defined by a contrasting coloured strip/edge tile.
7. East access stairs with shallow gradients and handrails will be provided to the main pool.
8. Double height handrails illuminated stair for partially sighted people and people of a smaller stature. Manifestation to glass balustrades to be used to assist guide dogs.
9. Single door widths to most routes are 1 metre width structural openings providing access for wheelchair users and will have vision panels to doors at high and low level on main public routes and will contrast in colour with the walls.
10. Use of colour will be carefully considered to define changes of plane / surface. Colours for door leafs, ironmongery and door frames have been selected to contrast. The same has been applied in respect of walls and floor finishes.
11. An induction loop has been incorporated into reception counters for those with impaired hearing.
12. The vanity areas to the changing spaces have shelving and mirrors set at a height for wheelchair users.
13. A changing places room has been provided with easy access from the changing area to the pool hall.
14. Accessible toilet provision is provided throughout the centre and ambulant disabled toilets.
15. Changing lockers: A number of full height changing lockers have been provided in all changing rooms for storage of possessions and mobility aids. These are full height compartments 1800mm high x 300mm wide x 500mm deep. The lockers will be signed for disabled use and have knee space under.
16. Accessible shower and family / disabled changing cubicles.



Blue areas denote accessible Provisions.

Accessibility Requirements - Ground Floor



1. Wheelchair bays provided to spectator seating area with carer seats
2. Fitness suite to incorporate equipment to suit those with disabilities - to be IFI accredited
3. At first floor, all primary escape routes from the building incorporate wheelchair refuges for use in the event of an evacuation and include Evac chairs.
4. Double height handrail and illuminated stair for partially sighted people and people of a smaller stature. Manifestation to glass balustrades to be used to assist guide dogs.
5. Single door widths to most routes are 1-metre width structural openings providing access for wheelchair users and will have vision panels to doors at high and low level on main public routes and automatic door entry where necessary.
6. Use of colour will be carefully considered to define changes of plane/surface. Colours for door leafs, ironmongery and door frames have been selected to contrast. The same has been applied in respect of wall and floor finishes.
7. The vanity areas within changing areas have shelving and mirrors set at a height to suit wheelchair users.
8. Accessible toilet provision is provided throughout the centre and ambulant disabled toilets.
9. Changing Lockers: A number of full height changing lockers have been provided in all Changing rooms for storage of possessions and mobility aids. These are full height compartments 1800mm high x 300mm wide x 500mm deep. The lockers will be signed for disabled use and have knee space under.
10. Accessible Shower areas to fitness changing spaces
11. 1 x Fully accessible lift to ground and first floor in accordance with Sport England Regulations
12. Accessible height hooks and 600mm deep benches for wheelchair transfer
13. Fully accessible dance studios



Blue areas denote accessible Provisions.

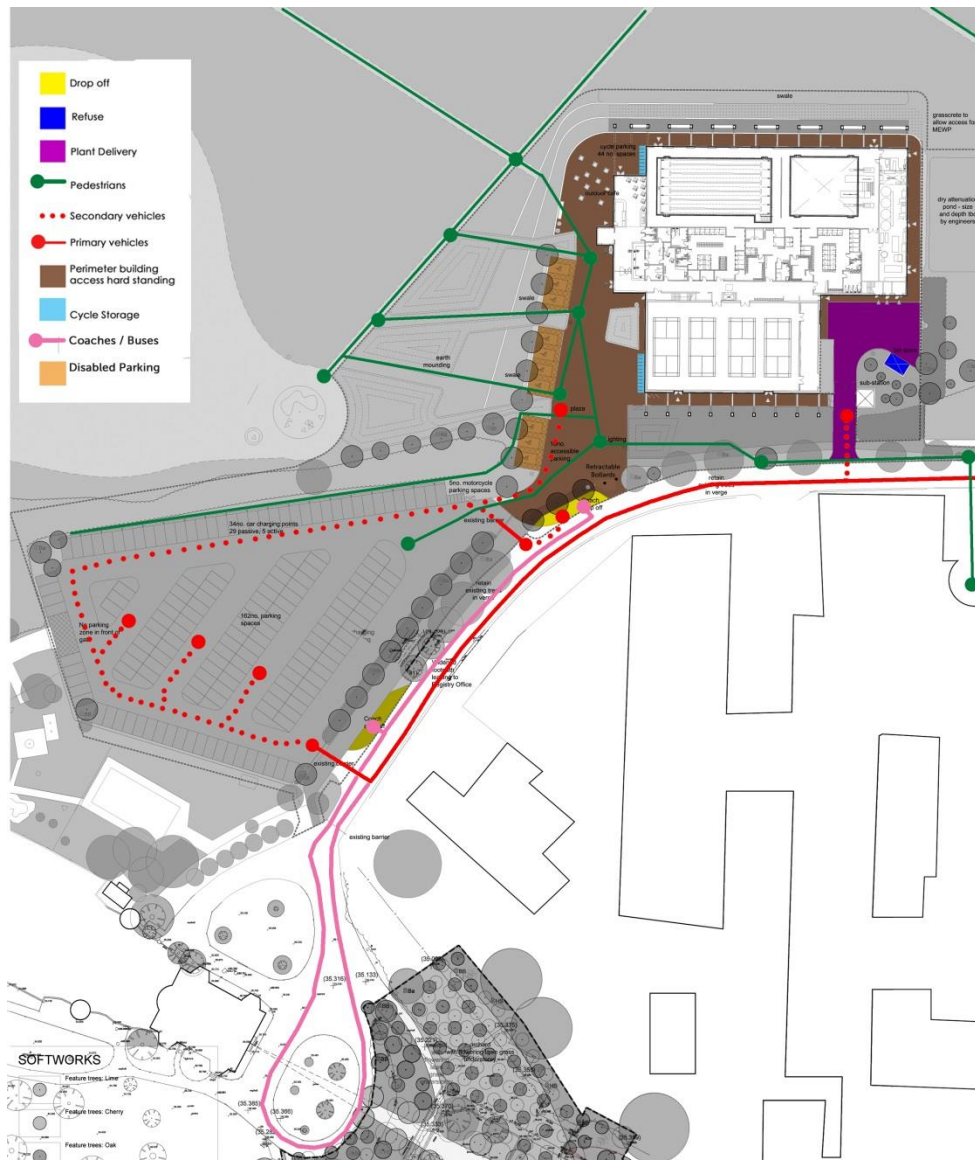
Accessibility Requirements - First Floor

Disabled Access Statement for MORDEN LEISURE CENTRE

Building Regulations Part M

Part M of the Building Regulations sets minimum functional access standards for buildings, but it must be recognised that Part M does not cover all of the inclusive design issues which are important in the design of sports facilities or to a high enough standard to create truly inclusive environments. Therefore, Sport England expects designers to refer to Sport England guidance, as well as the 'Approved Document M which supports Part M, when designing sports facilities.

The Layout of the Leisure Centre in its wider context is shown on the plan below. This illustrates the position of the building to the surrounding buildings and college. We note that all design features and layouts are in accordance with IFI Level 3 standards.



Disabled Access Statement for MORDEN LEISURE CENTRE
--

A high priority is given to making the building as accessible as possible to all taking into account the special needs of people with disabilities, children, ethnic/cultural diversity and women as well as taking into account the varying levels of sporting ability swimming, in particular, is an activity that many physically disabled people enjoy and benefit from most.

The design shall as a minimum comply with the following:

- Part M of the Building Regulations
- 1995 Disability for Accessibility produced by the Centre for the Accessible Environment
- Sport England and ASA guidelines.
- Equalities Act (2010).

Specific requirements for the components are:

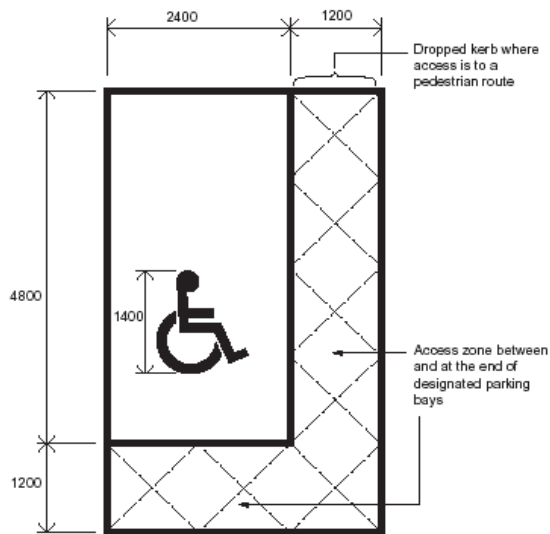
- Access to the Leisure Centre and the First Floor.
- Will include circulation routes for wheelchair based activities.
- Where internal floor levels change any alternative access route will be clearly indicated, lifts will provide voice announcements, have Braille information and floor buttons at appropriate levels for people who use wheelchairs.
- Induction Loops throughout the building shall be provided to allow enjoyment of the Centre by people who are hearing impaired.
- Appropriately, designated directional signs that consider the needs of people with visual impairment will aid access around the facility.

1.1 Approach and Parking

Close to the building are:

- Parking spaces for 10 disabled badge holders.

Disabled Access Statement for MORDEN LEISURE CENTRE



In addition, the following will be introduced to the building:

- Drop kerbs to be installed at all approaches to the building
- Provision for access by wheelchair users and sports wheelchair zones
- Doors to be wide enough to allow wheelchair access
- Doors from the boot of the car to the sports hall on main public routes to be a minimum 1200mm clear opening for sports wheelchairs
- Door handles at wheelchair height to be installed
- Level access to be provided
- Areas to be well lit, particularly those with potential hazards
- Clearly marked step edging to be used throughout.
- Easy access to reception counters and foyer area.

The approach and arrival layout is, we believe, clear and efficient and sits well with the plaza. Vista's to the entrance are clearly defined and creates a sense of arrival to the main entrance. Importantly there is a clear separation between pedestrian and vehicle routes. All routes from the existing car park zones and from pedestrian routes to the main entrance will be level access.

Disabled Access Statement for MORDEN LEISURE CENTRE
--

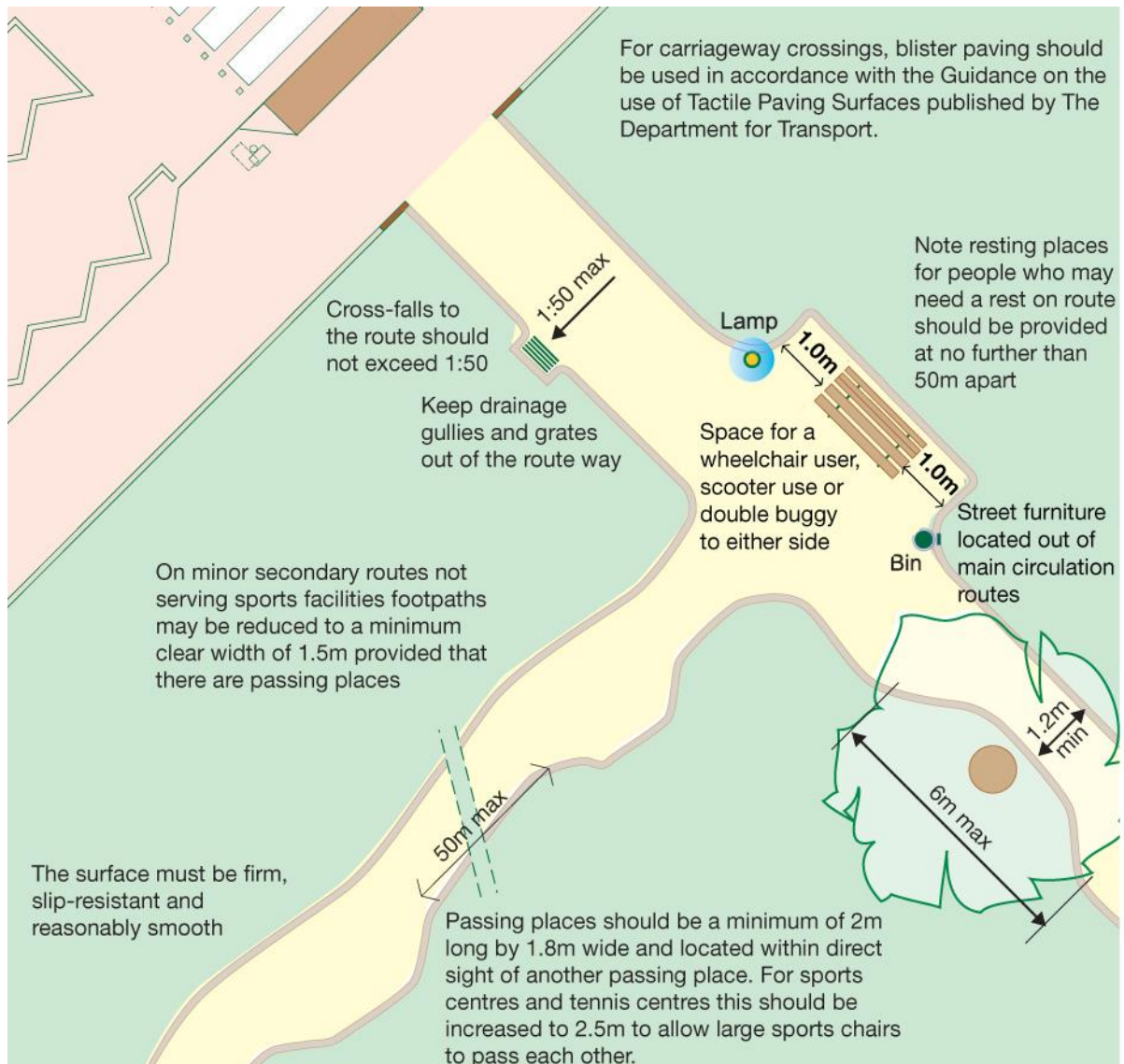
All pathways have a **minimum** vertical clearance of 2000mm (2m). We have kept pathways clear of any obstacles such as pot plants, rubbish bins, fire hydrants, planter boxes or seating.

Detailed guidance on the access routes to and around buildings is available in Section 5 of BS 8300. The headlines are:-

- Provide landmarks along routes to help orientation.
- Traffic routes will be clearly distinguishable from pedestrian routes through use of texture and colour.



Disabled Access Statement for MORDEN LEISURE CENTRE



If such obstacles are to be placed in a pathway, we have positioned them around the perimeter. These obstacles will be of a high luminance contrast to the floor and wall surfaces/surround background. Freestanding pillars or poles will be away from circulation routes or buffered by hand rails or furniture or surrounded by Tactile Ground Surface Indicators.

Raised kerbing separating paths and roads to which there is a step generally contrasts with the road surface (e.g. the Kerb is light grey concrete; the road is dark grey tarmacadam).

Disabled Access Statement for MORDEN LEISURE CENTRE
--



Based on the variable level of the site, building and its internal spaces have been designed to ensure that the floor levels provide level ingress and egress for users. The central pathway to the main entrance from the car park has been designed at 1:40 generally at the base of the path, the gradient is 1:60 towards the main entrance doors.

Benches have been positioned along plaza, where some visitors may feel the need to rest.

The base of obstacles and structures will be able to be located with a long cane. Their bottom edge will be less than 200mm above the floor surface. All pathways have contrasting edges (luminance and texture) to assist people in maintaining a straight direction of travel. Examples of this include contrasting skirting boards and grass bordering external pathways. We will also consider adding a tapping rail from the car park to the main entrance with clear access to aid those with visual impairments.

The site lines to the main entrance from the car park are very good and clear. The building form and the beam colonnade, assists in guiding the visitor to the entrance doors. We will also introduce signage and floor markings indicating a well-lit route to the main entrance. This will catch the eye and the flow of the building leading the visitor towards the main entrance. Signage will be designed with contrasting lettering and backgrounds for the visually impaired (e.g. the background is dark blue, the text is silver and vice versa). Directional signage in particular is provided with raised lettering where pedestrian traffic is catered for.

Disabled Access Statement for MORDEN LEISURE CENTRE
--

Splay corners at pathway junctions have been provided to ease manoeuvring for wheelchair users.

1.2 Gradients

The walkway leading to the leisure centre from the car park will have shallow gradients of no more than 1:30 avoiding the need for steps or ramps. All entrance and exit points from and to the leisure centre will provide level access. Drainage cross-falls of footpaths do not exceed 1 in 50 as steep cross falls make it difficult to control a wheelchair.

All gratings will be flush with paving and located beyond the boundaries of the access route. The plaza and footpaths use block paving as a finish and all paving will be laid evenly.

All floor finishes shall be slip resistant when wet.

1.3 Entrance

The entrance to the building incorporates an automatic sliding door lobby, which is suitable for wheelchairs or pushchairs.

Entrance doors will not be made of highly polished material such as stainless steel. They will, however:

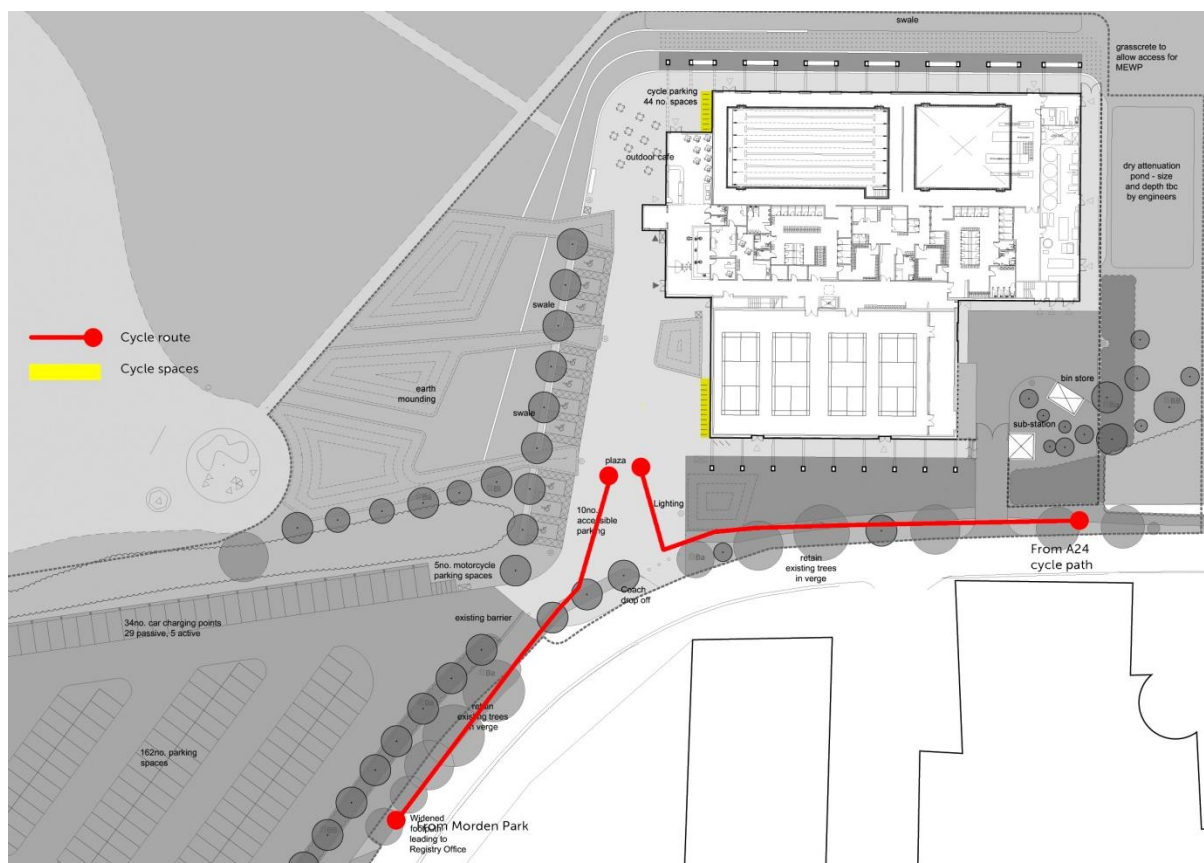
- Be a suitable width for the scale and type of facility (2.4m wide opening)
- Be fitted with level thresholds (maximum vertical projection 15mm).
- Be free of hazardous gratings adjacent to the door and its approach.
- Be distinguishable from adjacent walls and screens.

Disabled Access Statement for MORDEN LEISURE CENTRE

1.4 Cycle Parking

Secure and sheltered cycle (44no. with 10no. sheltered spaces) and mobility scooter parking has been provided. The hoops and locking posts will be located on the approach to the main entrance, where they will be visible and close to the main entrance doors and will be well lit at all times.

Provision has been made for parking cycles in secure locations away from pedestrian routes off the main plaza. Space will be available for adapted cycles and tandems.



Disabled Access Statement for MORDEN LEISURE CENTRE
--

The type of hoops to the plaza will be similar to the image below. This prevents people sitting on the hoop.



1.5 External Lighting

External lighting, and lighting at escape points has been designed to assist the visually impaired.

Footpaths will be well illuminated to avoid the creation of contrasting pools of light and darkness (100 lux to steps and ramps, 50 lux on main routes).

1.6 External Steps

Anywhere with external steps, a minimum clear landing of 1.5m has been provided at the top and bottom of each flight of steps. All landings will be clear of door swings.

- Straight flights have been provided as they are easier to negotiate than curved or dogleg flights.
- Step treads and risers will be consistent and in the range of 0.15-0.17m for risers and 0.25-0.3m for treads.
- We have avoided single, isolated steps and twelve is the maximum number of risers in any flight.
- Each step nosing will contrast in colour and luminance with the adjacent tread.

Disabled Access Statement for MORDEN LEISURE CENTRE
--

1.7 Assisted Access with Guide Dogs

An assistance dog is likely to need access to a designated toilet area away from other activities.

Note the following requirements:

- The area will have a concrete surface easy to clean and have provision for regular sanitation cleaning.
- All facilities will have an assistance dog policy (see management section).
- It will be free from litter, glass and other harmful articles.
- Appropriate internal provision will also be considered.

In addition to the above, all glazing on approach to the building will incorporate manifestation that allows guide dogs to easily negotiate the perimeter of the building and navigate around large expanses of glass.

2.0 INSIDE THE FACILITY

2.1 Entrance Lobby

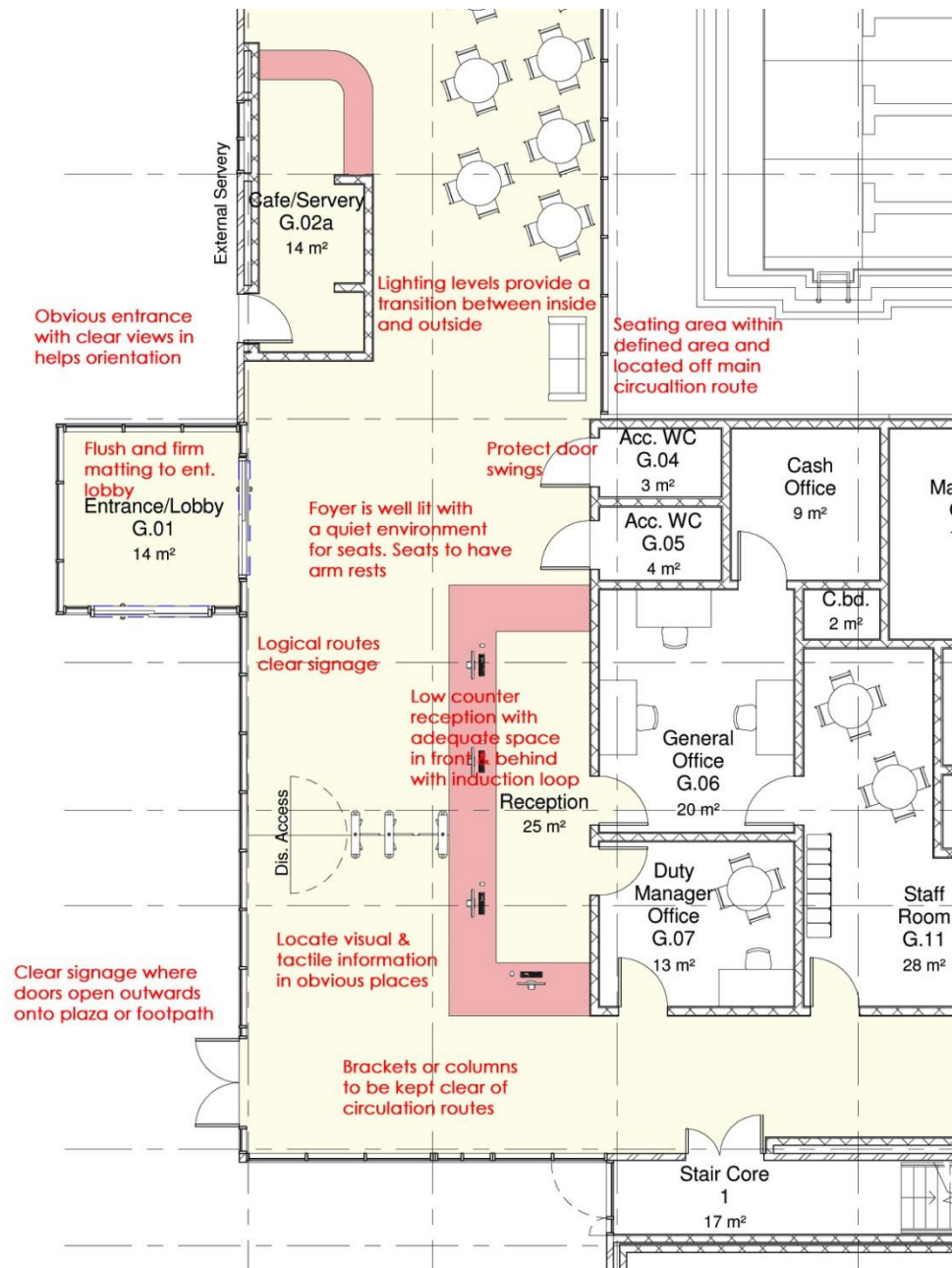
A recessed cleaning surface/mat will be provided within the entrance lobby to prevent moisture being brought into the building on peoples shoes/wheelchair and buggy wheels.

The mat will not create a trip hazard. Coire matting and similar materials will not be used.

Immediately at the entrance of the centre, there are seats / sofas for visitors to easily rest upon entering the sports centre.

Disabled Access Statement for MORDEN LEISURE CENTRE

2.2 Foyer / Reception Area



Disabled Access Statement for MORDEN LEISURE CENTRE

The layout of the reception area will be clear and logical and minimises the need for signs to guide people through it. Close attention to detail is critical to the success of this space. See plan below. The following has been considered:

People coming through the entrance door will have a clear view of the reception desk. This has meant the careful consideration to the location of the desk and the use of colour and lighting to highlight its presence.

People working in the reception area will have a clear view of the entrance.

Turnstiles are provided and we have ensured there is a pass gate to allow for people with pushchairs or wheelchairs (including sports wheelchairs resulting in a 1200mm wide access gate). The gate will be electrically operated from behind reception (usually via a foot pedal).

The lifts, staircase and public telephone is visible and close to the reception desk.

Counters before and after turnstiles to include lower counter areas for wheelchairs and children and also be able to accommodate staff behind the desk

The desk will include a lowered section - see BS8300 Section 11.1

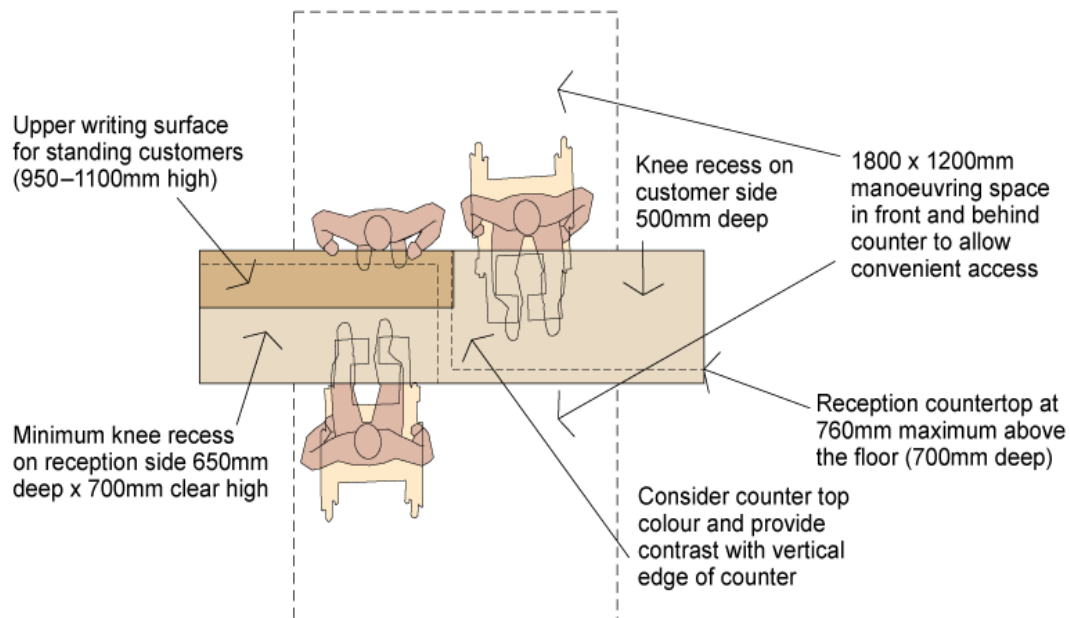


Disabled Access Statement for MORDEN LEISURE CENTRE

The counter top and front will contrast visually in order to assist the location of the counter edge by blind and partially sighted people.

Screens and grilles can inhibit communication and will only be used where essential for security considerations.

An induction loop must be provided to assist users with hearing impairment and this must be clearly indicated using the standard symbol. Note: the induction loop will also be accessible from the lowered area of counter.



2.3 Corridors

As a minimum the unobstructed width of a corridor will be at least 1.5m. However, where the unobstructed width is less than 1.8m, it must have passing places at least 1.8m long and have an unobstructed width of at least 1.8m to allow wheelchair users to pass each other. As large numbers of wheelchair users are expected, the corridor widths have been increased to at least 3.0m to allow wheelchair users to pass each other freely along main routes. This will also allow for the passage of sports wheelchairs.

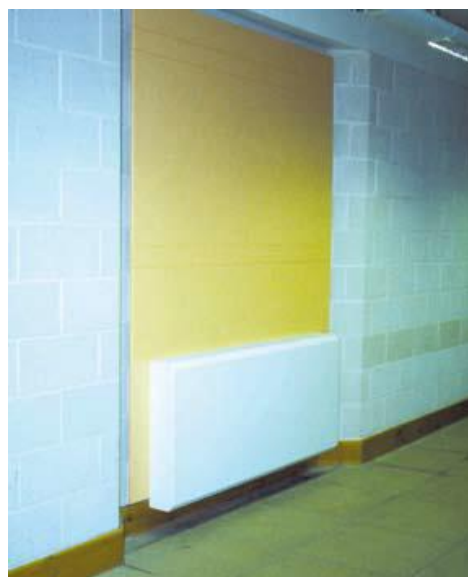
Corridors will be wide enough to allow wheelchair users to approach and gain easy access through doors off the corridor.

Disabled Access Statement for MORDEN LEISURE CENTRE
--

Corridors will be unobstructed; for instance, fire extinguishers, radiators, and so on will not project into the clear corridor width to ensure they do not present a hazard to children, wheelchair users or visually impaired people.

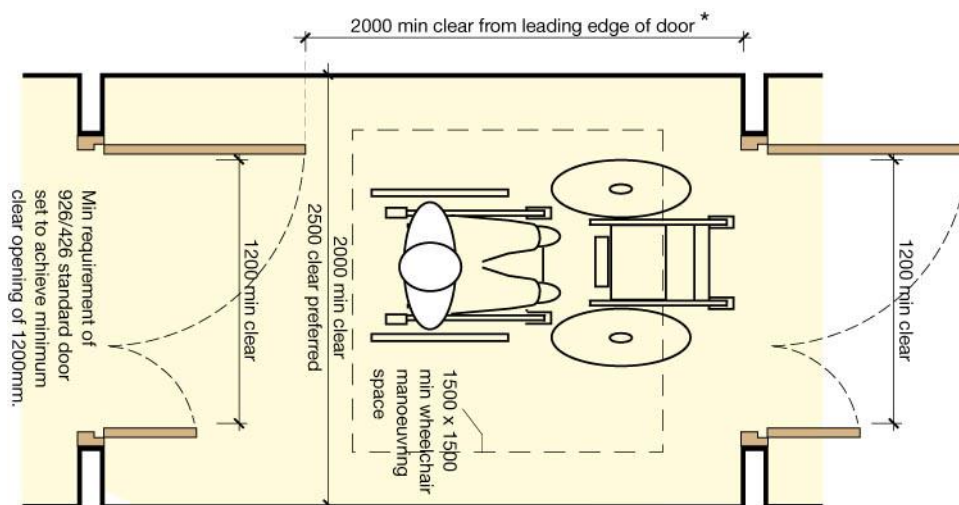
Doors will be recessed when opening out into a corridor, to avoid a significant hazard.

Avoid glazing at corridor ends.



Disabled Access Statement for MORDEN LEISURE CENTRE

Corridor areas will allow easy access and turning of wheelchairs and pushchairs. This includes lobby areas and corridor spaces noted above. Where sports wheelchairs have to be catered for, 1200mm (min) wide doors need to be provided to allow for the splayed wheels. These have been catered for with door and a half units as below. Where single doors, allow for push pad due to weight of doorset.



2.4 Stairs

- There is a clear width of 1.1m in all staircases
- The maximum rise of each flight is 1.8m with risers no greater than 0.17m and treads no less than 0.25m.
- All steps, no matter how few, have been fitted with a suitable handrail on both sides
- All landings will be level
- All changes in level, including landings, are to be fitted with a continuous handrail.
- All stair nosings will be clearly visible and made of contrasting slip-resistant material.

Disabled Access Statement for MORDEN LEISURE CENTRE
--

- The nosing will wrap around the riser so that it extends 55mm on the tread and 55mm down the riser.
- All staircases will be illuminated to at least 100 lux at tread level and be designed to ensure that people do not have to negotiate stairs in their own shadow.

We will avoid using glossy, polished materials that can cause glare or reflections that may impact on the safety of the stair.



2.5 Handrails

- See BS8300 and Approved Document M.
- Handrails will be provided at all changes in level, however small, and give adequate grip and support.

They will also take account of the following:

- Colour or brightness will contrast against the background so that they are easily distinguishable.
- Will have an outside diameter of 45–50mm for ease of grip.

Disabled Access Statement for MORDEN LEISURE CENTRE
--

- Will be continuous and fitted with 'returned ends' continued a minimum of 0.3m beyond the top or bottom of the ramp or staircase.
- Will not project into the minimum clear width of the stair, ramp or corridor.
- Will be robustly fixed.

Balustrades will be designed to provide physical and visual security.

2.6 Lifts

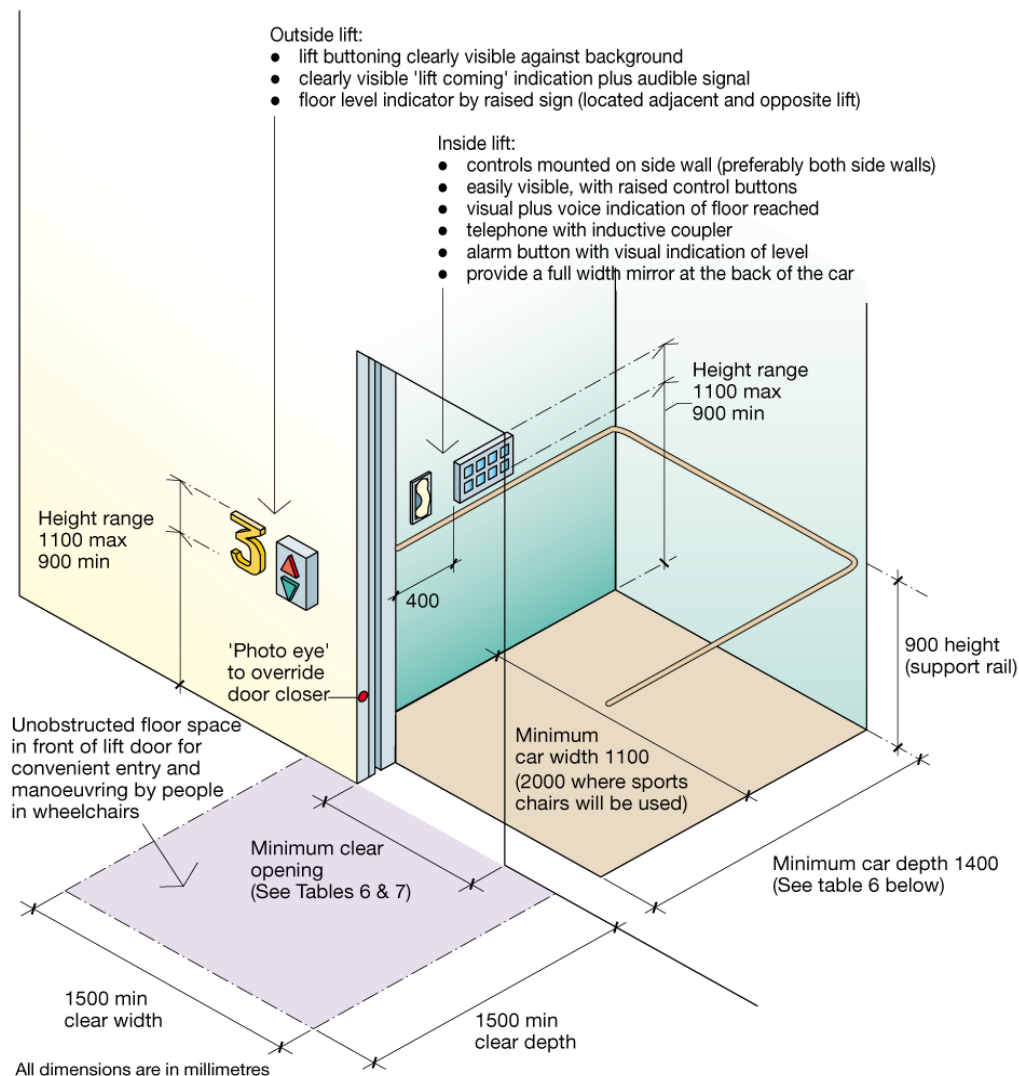
- See BS8300 and Approved Document M.
- The lift within the leisure centre is located close to the main circulation routes. We have provided 1no. 8 person passenger lift. The lift specification is as follows:
- The lift will conform to the requirements of BS EN 81-1, BS EN 81-2 and BS EN 81-70
- The internal lift space will be at least 1.1m wide x 1.4m clear depth internally and preferably 2.0m wide and 1.4m deep.
- A mirror will be provided on the back wall of the lift to assist the wheelchair user who has to reverse out of the lift.
- Within the car and at each landing there will be audible announcements and a clear visual display of the level reached.
- The lift controls will be clearly distinguishable, easy to operate and be within reach of wheelchair users. The buttons will have tactile numerals and symbols.
- Within the car the controls will be located on a side wall.

Disabled Access Statement for MORDEN LEISURE CENTRE

- Light fittings within the lift car will be located so that they do not cause glare; there will be a minimum light level of 100 LUX at floor level.
- Accurate levelling at landings is critical. This is dependent on regular maintenance.

At each floor level:

There will be clear space of at least 1.5 x 1.5m in front of the lift. Opposite and adjacent to the lift there will be clearly visible signs with raised numerals/letters indicating the floor level.



Notes:

- Lift doors should remain open for five seconds to allow adequate time for entry.
- Lift doors must be easily distinguishable from the adjoining wall.
- Consider fold-down seats in larger lifts.

Disabled Access Statement for MORDEN LEISURE CENTRE
--

2.7 Doors

The number of doors in a building have been kept to a minimum, since doors obstruct movement through a building for many disabled people as well as people with large sports bags. Doors may be heavy or awkward to operate if not properly designed and specified. Where they are unavoidable they comply with the following guidance:

Double doors must have at least one leaf that provides the minimum clear opening capable of allowing passage of a wheelchair without having to use the second leaf.

All public internal doors have a door and a half opening which allows for a larger leaf for the passage of a wheelchair (rather than double doorsets).

Wherever possible, all doors have a single swing rather than a double swing action. Doors will not be provided with rebated meeting styles, which are more difficult to negotiate.

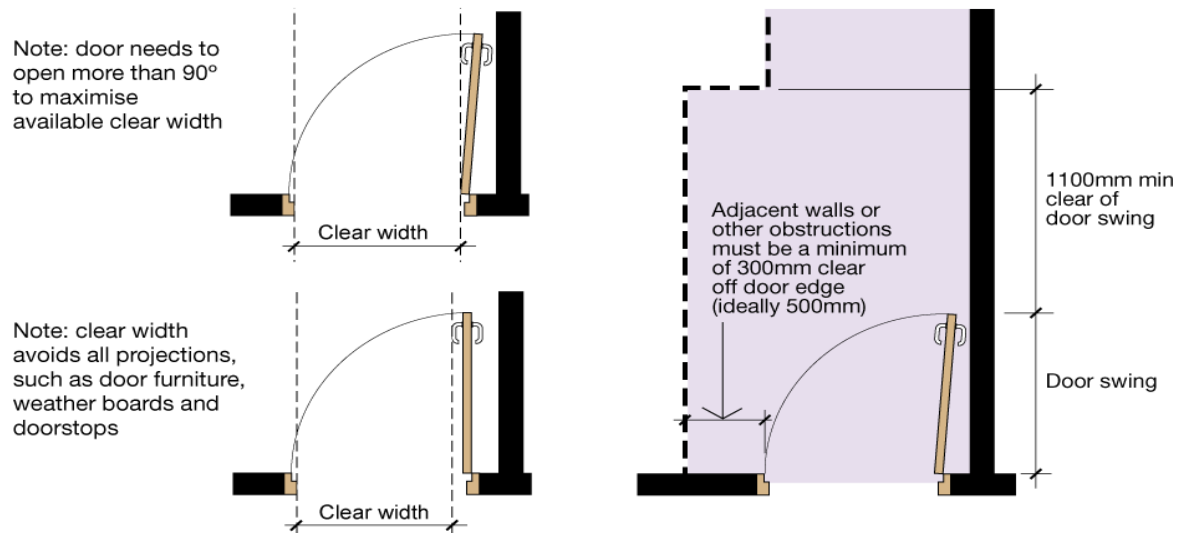
Location

Doors are located on the plan so that there is clear wall space of at least 0.3m to the leading edge side. Ideally – and for sport-specific situations (such as outside the fitness suite and wet change village entrance– this will be increased to 0.5m.

All doors have been designed and located so that they can swing to at least 90°, to ensure maximum door opening – see below

Doors will swing into rooms, not into corridors. Where unavoidable, doors swinging into a corridor will be fully recessed or protected by guardrails that lead people away from the door swing. Any guardrail must not restrict the minimum clear width of the corridor.

Disabled Access Statement for MORDEN LEISURE CENTRE



2.8 Door Closers

- Doors can act as barriers if great force is required to overcome the door closer. The door closer will be set to the minimum force necessary to close the door - see BS8300 section 6.5.2.
- Within the Morden Leisure Centre, closers will be specified to minimise the effort needed to open the door.
- We will not set the door closers at a high force level in order to overcome badly fitting hinges or smoke seals.
- Doors that are easy to open benefit everyone and are less likely to be damaged.
- Wherever possible, we intend to use electromagnetic catches linked to the fire alarm to hold the door open during normal use.

Disabled Access Statement for MORDEN LEISURE CENTRE
--

2.9 Door Furniture

- Doors will be fitted with ironmongery to facilitate use by push or pull operations.
- Door handles and pull handles will be located at a comfortable height for wheelchair and ambulant users as set out in BS8300.
- Door handles and pull handles will contrast with the door and will allow for the opening and closing of doors with the knuckles.
- We will use escutcheons that contrast with the face of the door to aid location of keyholes.
- We will provide a door pull on doors where no external handle is fitted so that it is not necessary to use the door key to pull open the door.

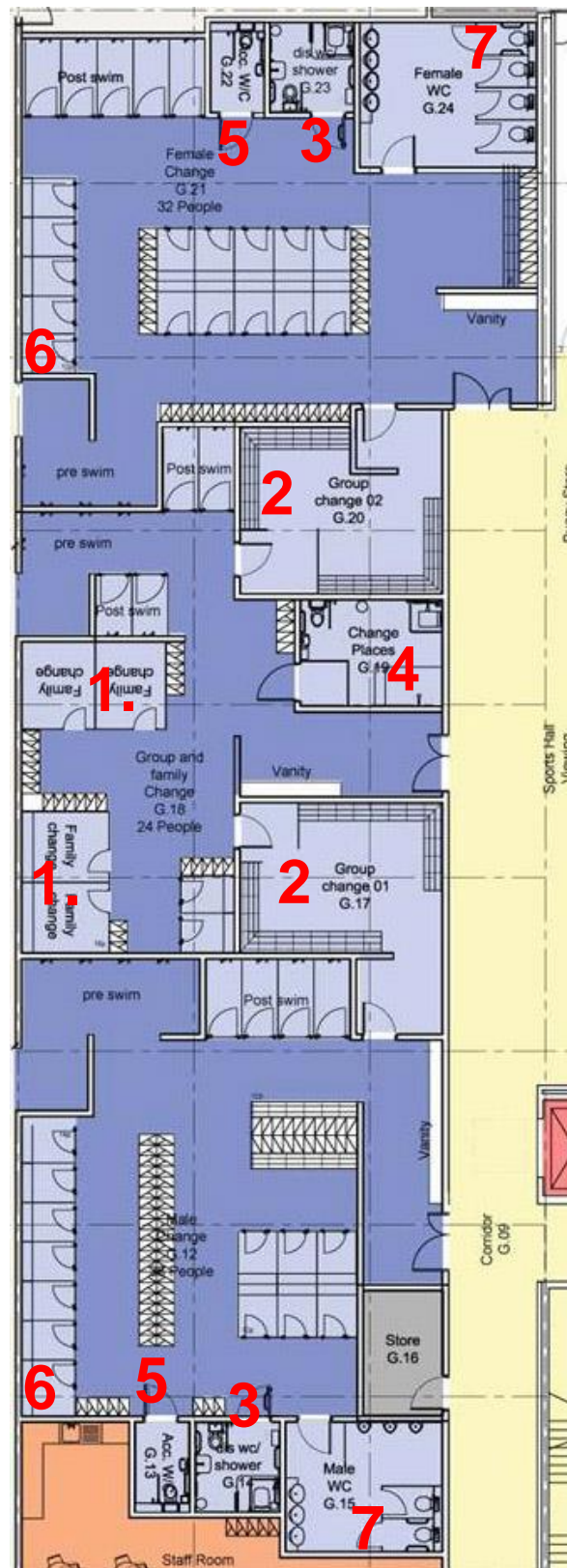
2.10 Refuge Points

The design will incorporate 2 refuge points on escape stairs which will also include for Evac chairs in each case.

2.11 Changing Rooms

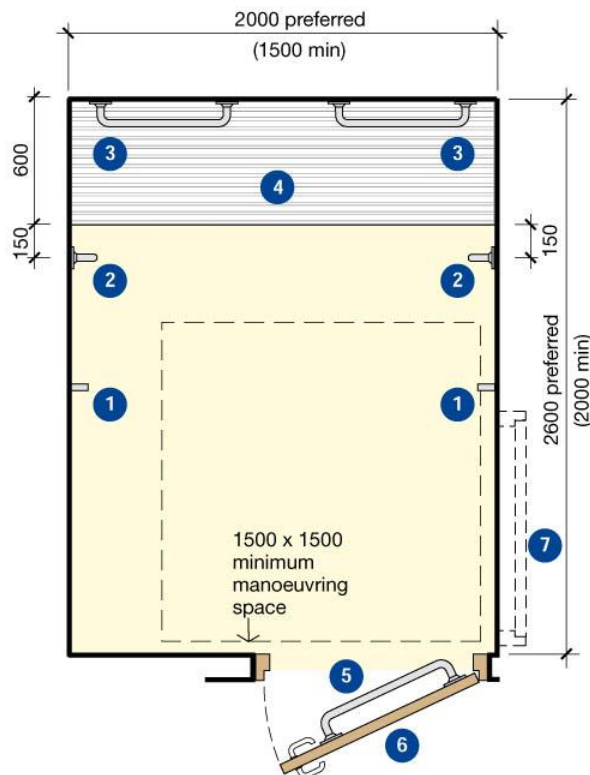
The following changing village layout in the Morden Leisure Centre, highlights the accessible facilities located in the changing areas around the centre.

Disabled Access Statement for MORDEN LEISURE CENTRE



Disabled Access Statement for MORDEN LEISURE CENTRE

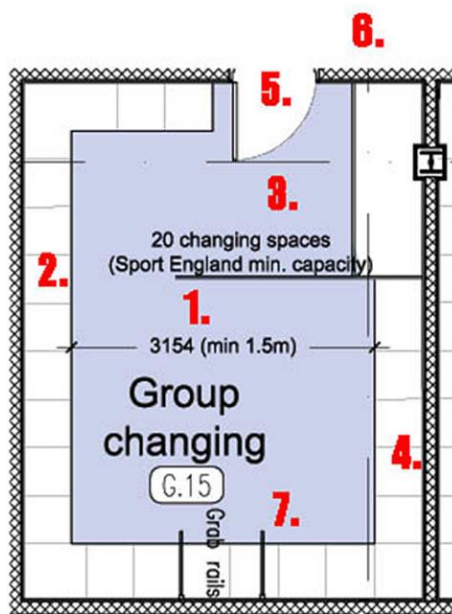
1. Family Change and Disabled Changing for less able bodied users



Key:

1. Two clothes hooks set at 1400mm and 1050mm above finished floor level
2. 600mm vertical grab rail securely fixed to side wall and set 800mm from floor level to the bottom of the rail
3. 600mm long horizontal grab rail securely fixed to back wall and set 680mm above finished floor level
4. 600mm deep cantilevered changing bench set at 480mm above finished floor level
5. Horizontal door pull to enable door to be closed when entering
6. Door to achieve minimum clearance requirement of 875mm
7. Alternative door position

2. Group Changing Areas



1. 1500mm minimum manoeuvring space to be maintained in the changing area in front of benches and fittings

2. Benches 450mm minimum depth (500 preferred) set at height 480mm with a smooth finish to surfaces and edges. Also provide run of 600mm deep benches to some areas

3. Entrance lobby provides privacy by screening the changing area but maintains the minimum clear width of 1000mm

4. Locate coat hooks above benches at 1400 and 1050mm

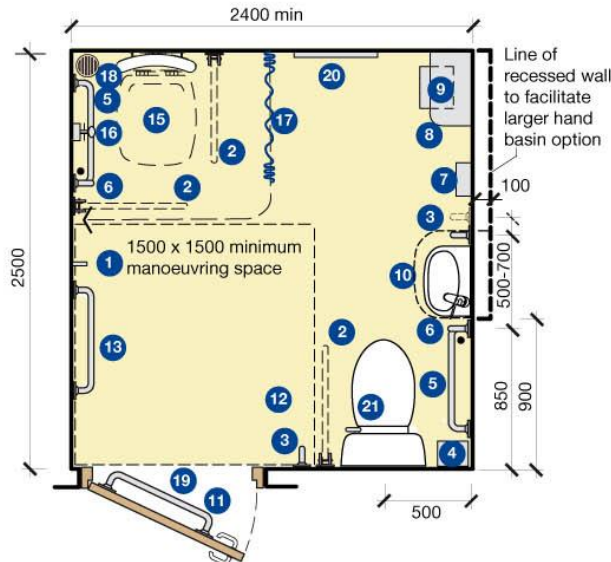
5. 1026mm door to achieve minimum clearance requirement of 875mm

6. Locate signs on wall adjacent to door edge to allow easy identification of the changing facilities

7. Pull down Grab rails to be provided.

Disabled Access Statement for MORDEN LEISURE CENTRE

3. Disabled Shower area



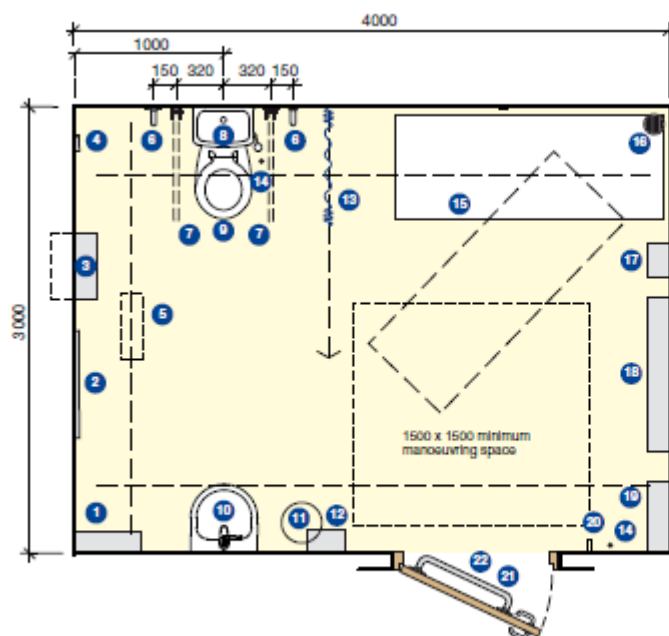
Key

1. Two clothes hooks set at 1400mm and 1050mm above floor level
2. Drop-down rail (without toilet roll holder)
3. Fixed vertical rail
4. Colostomy changing shelf for ambulant users 950mm above floor level
5. Fixed horizontal grabrail
6. Fixed vertical rail and adjacent alarm pull-chord with two red triangles
7. Automatic hand dryer
8. Low shelf with rounded corner
9. Disposal bin for miscellaneous items with sanitary dispenser above (750-1000mm above floor level)
10. Hand basin can be recessed in order for a larger basin to be used (as an alternative to a standard small basin)
The thermostatic mixer tap to be located on the WC side of the basin.
11. Horizontal door pull to enable door to be closed when entering
12. It is essential to keep the area adjacent to the WC clear to allow side transfer onto the WC
13. Fixed horizontal grabrail used as towel rail
14. 600mm deep fixed seat bench with rounded corner and soft round edges
15. Padded tip-up shower seat with back rest. Front edge set 600-700mm from back wall to allow lateral transfer
16. Shower controls - lever-operated, thermostatically controlled (max 41 degrees centigrade)
17. Shower curtain and rail
18. Floors laid with simple falls to flush gully or grating
19. 1026mm door to achieve minimum clearance requirement of 875mm
20. Mirror 1500mm high, located 600mm above floor level
21. WC: flush lever to wheelchair transfer side; transferring from a wheelchair to a WC imposes significant forces, therefore all fittings must be robust. Wing nut fixings should not be used to secure the toilet seat.

Disabled Access Statement for MORDEN LEISURE CENTRE

4. Changing Places Room

Note that room is to have an H frame ceiling hoist system



Note: All dimensions are in millimetres

Figure 19 Unisex 'Changing Places Facility' (see BS8300 figure 58) where assisted change is to be provided.

Notes:

- This is additional provision: see Table 8 of this guidance note
- Refer to notes on following pages 43-44, extracted from BS8300

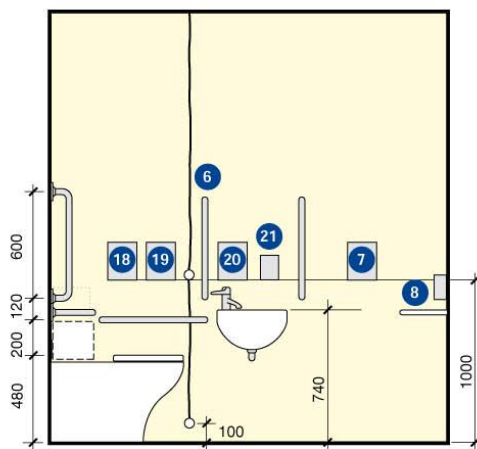
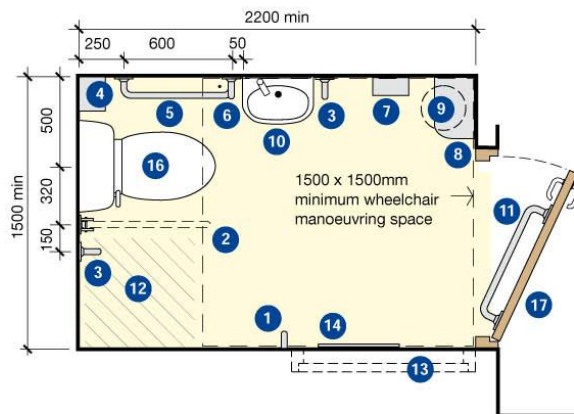
Key

1. Paper towel dispenser
2. Mirror 1500mm high, located 600mm above floor level
3. Large sanitary disposal bin, if possible recessed into the wall
4. Alarm reset button
5. Full room cover tracked hoist system
6. Fixed vertical grab rail
7. Drop-down support rails, one with a toilet roll holder
8. Flat-topped close-coupled cistern providing a back rest and a colostomy changing surface for standing users (where high or low level cisterns are used, a rail with a padded back rest and a separate colostomy changing shelf 125 mm to 150 mm deep and preferably 400 mm wide, with its surface 950 mm above floor level, should be provided)
9. Peninsular WC (see Figure 55 of BS8300 for the location of associated fittings)
10. Large power-assisted height-adjustable washbasin
11. Waste disposal bin
12. Manually-operated hand dryer
13. Retractable privacy curtain/screen
14. Alarm pull cord
15. Height-adjustable showering / changing bench, min. 1800 mm long
16. Floors laid with simple falls to flush gully or grating
17. Shower unit
18. Wide paper roll dispenser for use on the changing bench
19. Sanitary towel dispenser
20. Two clothes hooks, one at 1050 mm and the other at 1400 mm above the floor
21. The doorway should comply with BS8300 requirements
22. Horizontal door pull to enable door to be closed when entering

Disabled Access Statement for MORDEN LEISURE CENTRE

5. Accessible Toilets

Accessible toilets will be provided to all levels of the building as set out in the diagram below. Where more than one accesible toilet is provided in one area, we will hand the toilets to provide left and right handed access.

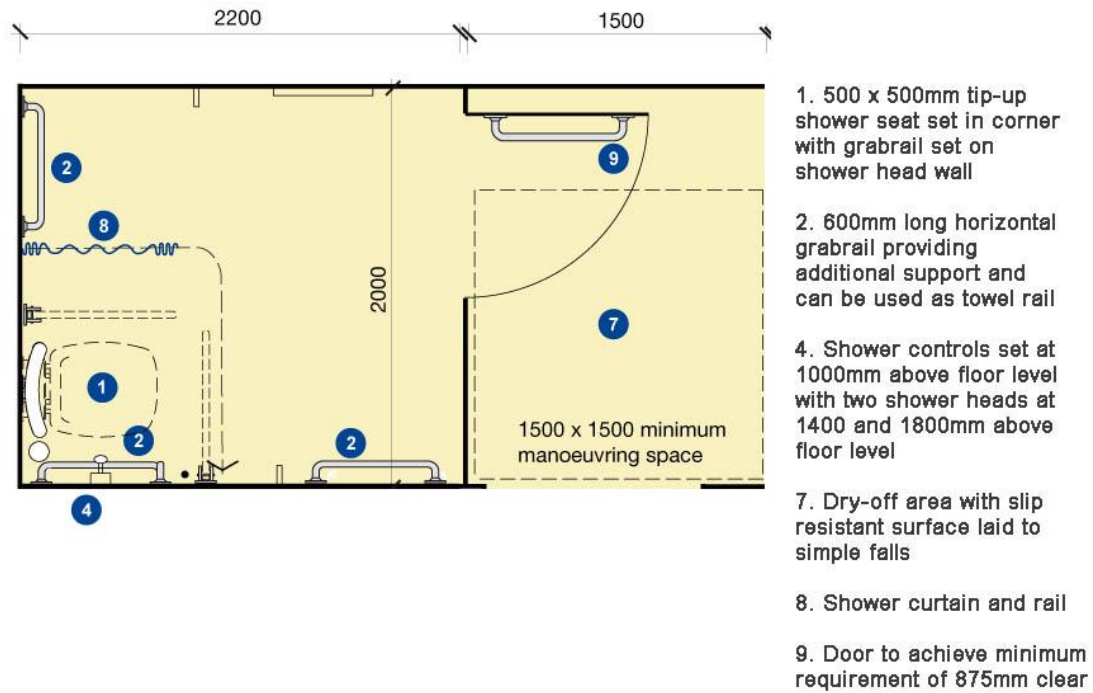


Key

1. Two clothes hooks set at 1400mm and 1050mm above floor level
2. Drop-down rail (without toilet roll holder)
3. Fixed vertical rail
4. Colostomy changing shelf for ambulant users 950mm above floor level
5. Fixed horizontal grabrail
6. Fixed vertical rail and adjacent alarm pull-cord with two red triangles
7. Automatic hand dryer
8. Low shelf with rounded corner and sanitary dispenser with controls located 1000mm above floor level
9. Disposal bin for miscellaneous items with sanitary dispenser above (750-1000mm above floor level)
10. Hand basin can be recessed in order for a larger basin to be used (as an alternative to a standard small basin). The thermostatic mixer tap to be located on the WC side of the basin.
11. Horizontal door pull to enable door to be closed when entering
12. It is essential to keep the area adjacent to the WC clear to allow side transfer onto the WC
13. Wall mounted access control touch pad set at 1000mm above floor level located clear of door swings
14. Mirror 1500mm high, located 600mm above floor level
15. Colostomy changing shelf for ambulant users 950mm above floor level
16. WC: flush lever to wheelchair transfer side; transferring from a wheelchair to a WC imposes significant forces, therefore all fittings must be robust. Wing nut fixings should not be used to secure the toilet seat.
17. 1026mm door to achieve minimum clearance requirement of 875mm
18. Toilet paper dispenser
19. Alarm reset button
20. Paper towel dispenser
21. Soap dispenser
22. Power operated double door set to achieve minimum clearance requirement of 1200mm for wider sports chairs in a 'sports chair' zone

Disabled Access Statement for MORDEN LEISURE CENTRE

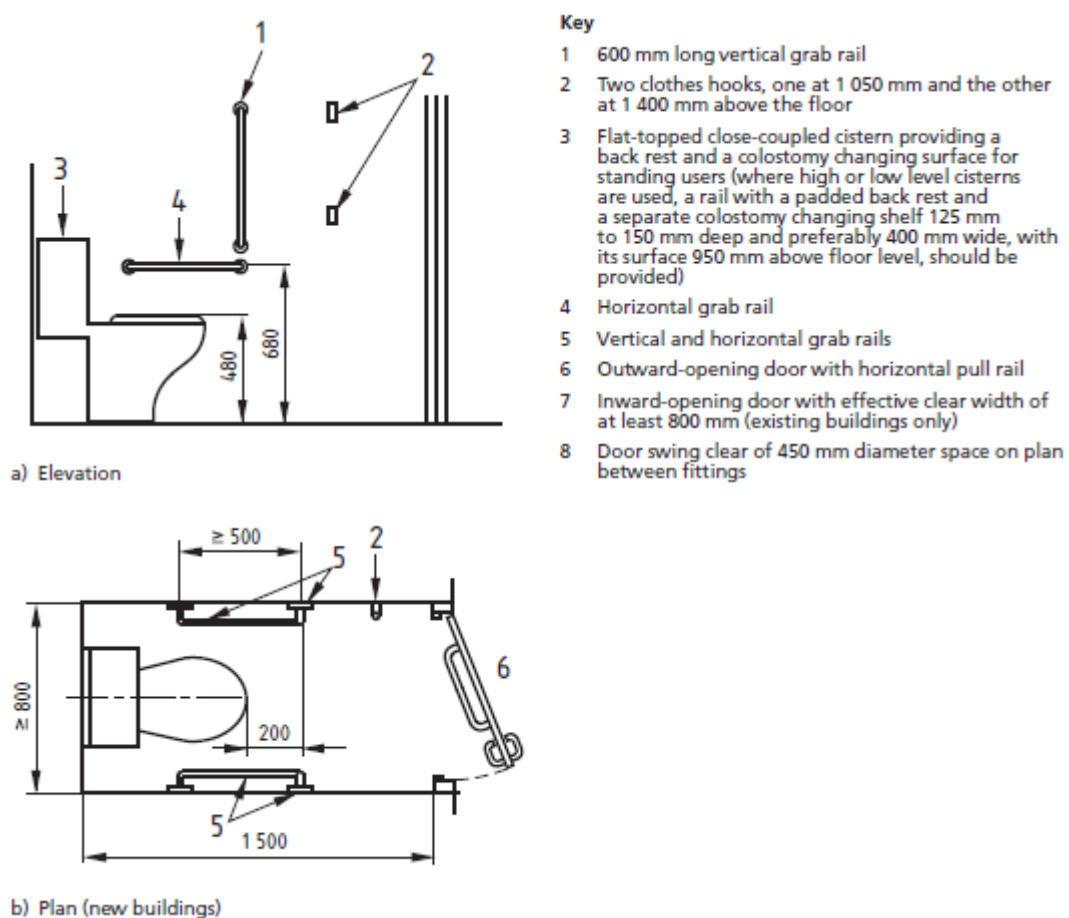
6. Disabled Shower Area



Disabled Access Statement for MORDEN LEISURE CENTRE

7. Ambulant disabled toilets.

An additional ambulant disabled cubicle is located within the male, female and unisex toilet areas.



Disabled Access Statement for MORDEN LEISURE CENTRE
--

2.12 The Swimming Pool

In the Morden Leisure Centre the swimming pool water is level with the pool surround. This arrangement makes entering and leaving the water easier as less upper body effort is required and fewer steps are needed between the edge of the pool surround and pool.

The disadvantage is that there is less clear definition between the surround and the pool, therefore clear demarcation of the pool edge is vital. We are therefore suggesting a demarcation tile 1m away from the pool edge. This is also useful for swimming classes.

Galas, school use, as a perimeter band to stand outside of.

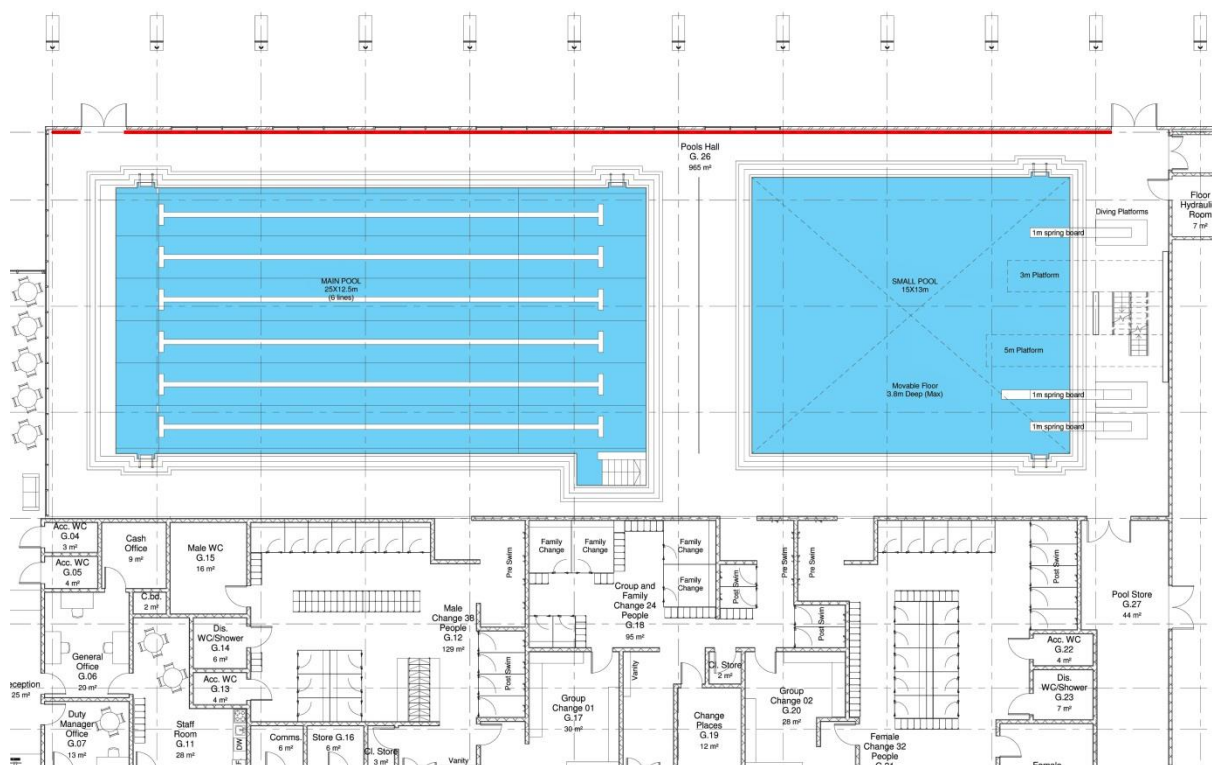


Design and detailing of the pool edge must warn swimmers that they are approaching the pool. This is achieved by using colour and tactile information.

Disabled Access Statement for MORDEN LEISURE CENTRE

The small pool will be accessible to disabled children and other groups who may prefer a shallower depth of water and warmer temperatures. With a moving floor integrated, this provides the flexibility of depth.

2.13 Pool surround benching



Benches against the wall on the pool perimeter against the glazing (in the form of a tiled shelf) can be used and of benefit to some disabled swimmers. They provide a secure place to rest before entering or after leaving the pool.

2.14 Access to the Pool

The main pool will have easy step entry into the pool tanks. These have shallow gradients with handrail supports for those entering the water. They will include for the following:-

- Be fitted with handrails that have good grip and contrast on both sides.
- Have handrails with an adequate extension at the top and bottom of the steps.

Disabled Access Statement for MORDEN LEISURE CENTRE

- Have maximum risers of 0.14m.
- Have minimum going of 0.3m.
- Be fitted with a guardrail where they are recessed into the pool tank.
- Be located at the shallow end.



Disabled Access Statement for MORDEN LEISURE CENTRE
--

2.15 Hoists

Mechanical assistance will be available to help disabled swimmers into the pool. Some swimmers prefer to be assisted into and out of the water by helpers rather than risk embarrassment by using a slow-moving aid such as a hoist. Hoists are potentially a serious risk to any untrained helper and therefore will only be operated by members of staff trained in their use. When not in use they will be secured against unauthorised use. We have however provided for hoist sockets, when the pool lift system is not possible.

Hoists are available in a range of styles but we have selected the preferred system by Sport England – the PAL hoist system.

The PAL features a mechanical actuator, which is the same reliable technology used on hospital beds all over the world. The actuator is powered by a rechargeable 24-volt battery; a consistent power source that insures that the PAL will work when you need it to work. Every time.

The unique design of the PAL allows it to be adaptable to virtually all swimming pool configurations. Its arms reach over the pool edge and can vary in length depending upon the amount of required clearance.

Either the user or attendant can operate the PAL with ease. The unique design of the seat was specifically engineered for people with disabilities. The seat is deep enough to provide stability and has no edge to facilitate transfers. The controls on the waterproof hand pendant are easy to understand and operate. Set-up consists of rolling the lift into place along the edge of the pool and locking the wheels.



Disabled Access Statement for MORDEN LEISURE CENTRE
--

2.16 Temperature

The following are recommended water temperatures.

- Competitive swimming 27oC
- Recreational, adult teaching 28oC
- Children teaching, leisure 29oC
- Babies, disabled people 30oC

2.17 Spectator Viewing

The first floor spectator viewing gallery overlooks the main 25m 6 lane pool and intermediate pool and will have approximately 44 seats for parents, coaches and general spectating. Using the Sport England guidelines and %age split, there are two (2) disabled viewing platform with a carers seat next to it. The site lines from the disabled viewing and the remaining seats, uses the C value method to lane one of the pool.

2.18 Fitness Suite

The fitness suite has IFI accredited machines and the layout has been designed around those with disabilities. This includes the circulation around and between machines for wheelchairs and escape.



Disabled Access Statement for MORDEN LEISURE CENTRE
--

2.19 Social Areas

Layout

- Gangways in areas between tables in the vending cafe and other furniture and fittings will have at least 1.2m clear width.

Furniture

- Furniture will be stable but movable to allow maximum access within social areas. Seating areas for wheelchairs will be provided through the height of furniture. Designated seating bays will be looked at and reviewed with the operator.
- We have considered the use of tables with legs rather than a central pedestal. This will ensure stability if the table is used to support a person rising from their seat. Tables will have a clear under-top height of at least 0.7–0.75m to allow a wheelchair to be drawn in.

Seating

- Seating has been provided in areas wherever people may need to wait.

Lighting

Lighting shall take into account the needs of people with visual disabilities – creating a well modelled and atmospheric space. Minimum levels on surfaces such as the Information or Reception Desk will be 350 lux. Stair treads will have a minimum of between 50-75 lux tread levels and avoid the large changes in lighting level.

2.20 Decoration

The décor of the spaces and areas such as the café will take into account the requirements of people with visual disabilities and the needs of people with hearing disabilities to see others talking with sign language. All public spaces will have contrasting wall and floor colours and doors and their frames will contrast.

Disabled Access Statement for MORDEN LEISURE CENTRE
--

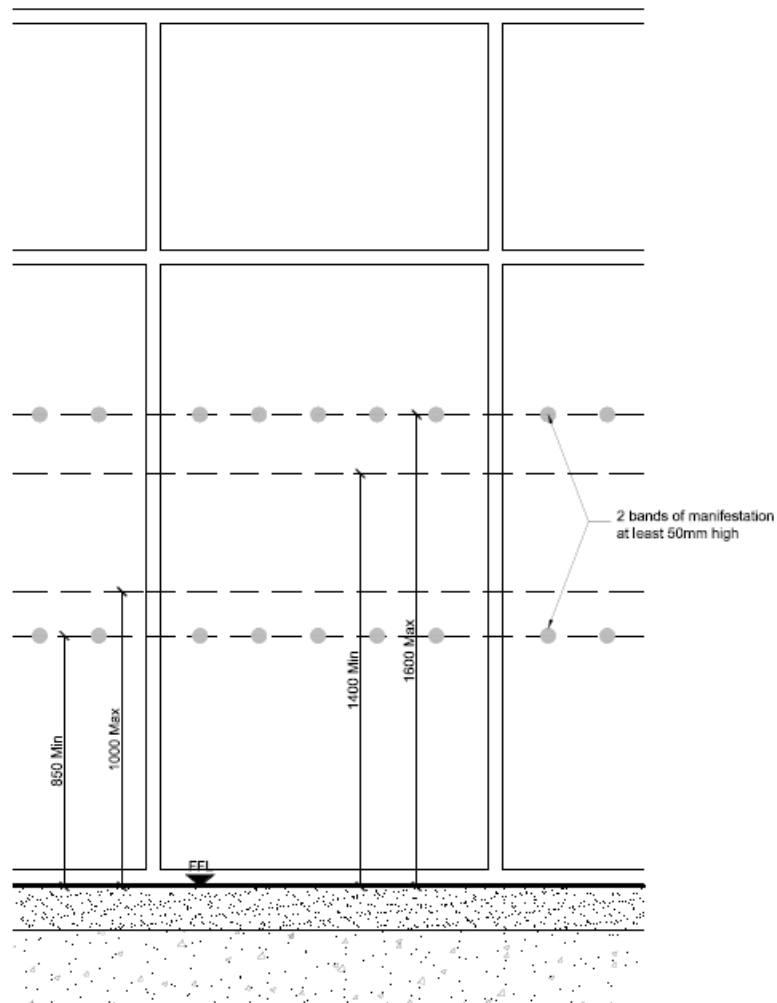


Disabled toilets and changing areas shall have contrasting grab rails and seats etc. Walls shall also contrast with the toilet elements.

2.21 Safety

Where large amounts of glazing is used in the design of the building, then care shall be taken to ensure that people with a visual disability will not be endangered by the design. Clear manifestations and contrasting coloured frames shall ensure that large areas of glazing are clearly highlighted.

Disabled Access Statement for MORDEN LEISURE CENTRE



Manifestation to glazing

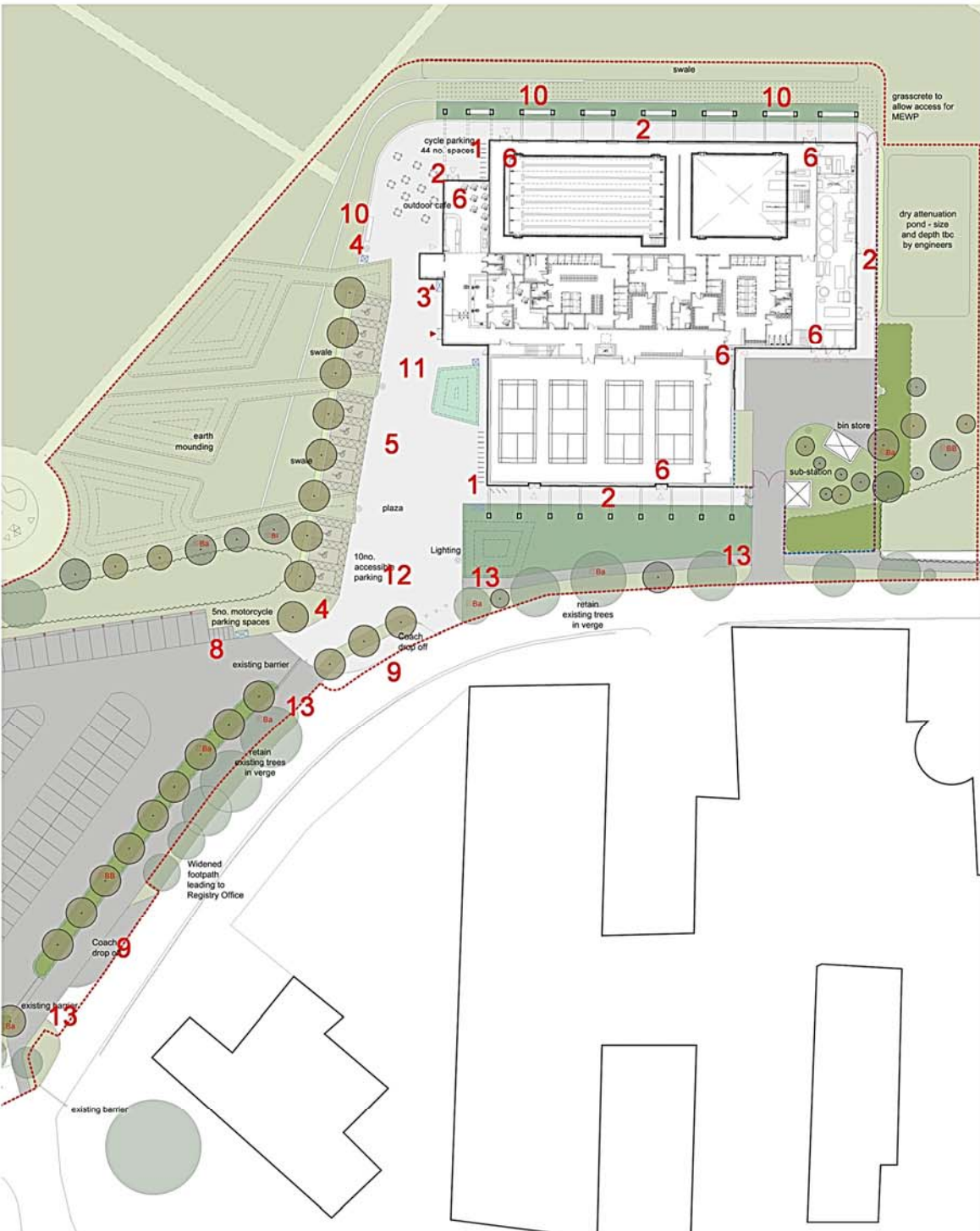
2.22 Fire Safety

Each escape stair has an area of safe refuge on the first floor, with assistance call points linked to the permanently staffed desk point, will be provided. Use of xenon flashing beacons to augment the public address fire alarm system for the benefit of hearing impaired people will be included in the fire escape strategy.

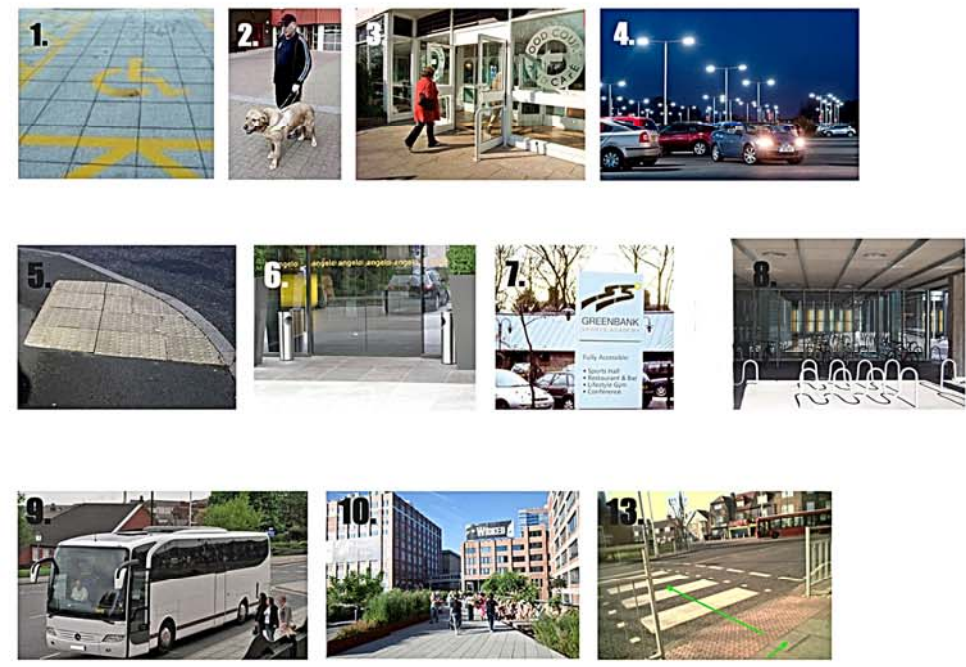
The design of the building, lifts, service areas, circulation spaces and changing / WC cubicles will ensure that disabled people will be able to leave the building safely from any floor.

Disabled Access Statement for MORDEN LEISURE CENTRE
--

Anywhere in the building where people may be on their own, the alarm system will include a light system to advise people who are hearing impaired that there is an emergency.



1. Ten (10) accessible parking bays have been provided at points close to the main entrance to the building. These have been designed in accordance with BS8300, including provision of a 1200mm access margin to each parking bay to both side and rear (for boot access to wheelchairs).
2. Level access to the approaches and entrance to the building with 2m wide pathways (min). All corners to footpaths are to be rounded or splayed where
3. Main entrance doors to be automatic opening with infrared sensors located to suit wheelchair bound persons.
4. External lighting, and lighting at escape points has been designed to assist the visually impaired.
5. Raised kerbing separating paths and roads to which there is a step generally contrasts with the road surface (e.g. the Kerb is light grey concrete; the road is dark grey tarmacadam).
6. Level egress from all ground floor escape doors has also been provided.
7. Signage has been designed with contrasting lettering and backgrounds.
8. Exterior Bike and Mobility scooter parking has been provided close to the entrance and under cover.
9. Coach drop off point and general drop off is adjacent the main entrance. Drop off point to have 2m wide dropped kerb and space behind the parked vehicle for manoeuvring.
10. Benches located along the route to the entrance but not causing obstruction
11. Approach to the main entrance doors not less than 1:60
12. No obstacles on the approach to the building.
13. Clear crossing points with tactile paving



Accessibility Requirements - Site Plan

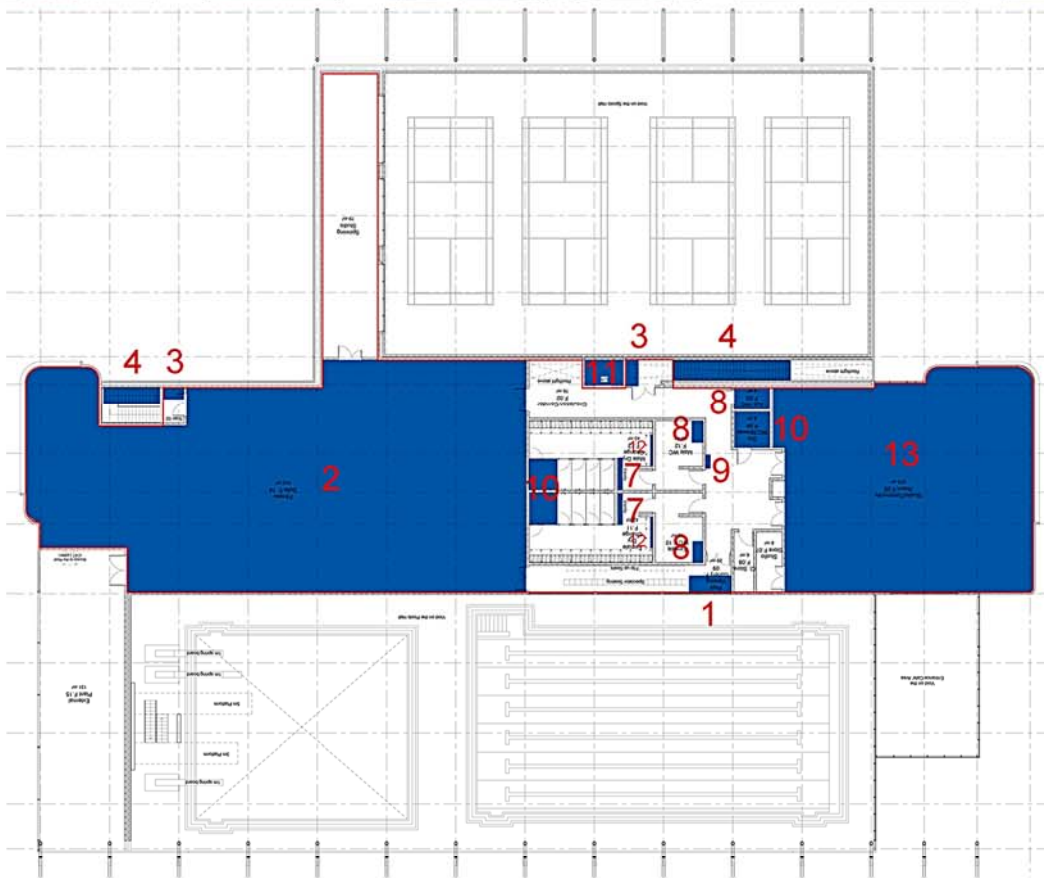


1. Automatic opening entrance doors.
2. The reception counter is provided with a dropped section for wheelchair access.
3. Turnstiles where provided have 1200mm access gates for sports wheelchairs and pushchairs to pass.
4. Socket points around both pools will be provided for a hoist if required (PAL)
5. Both pool have been designed to be level deck.
6. The pool water edge will be defined by a contrasting coloured strip/edge tile.
7. East access stairs with shallow gradients and handrails will be provided to the main pool.
8. Double height handrails illuminated stair for partially sighted people and people of a smaller stature. Manifestation to glass balustrades to be used to assist guide dogs.
9. Single door widths to most routes are 1 meter width structural openings providing access for wheelchair users and will have vision panels to doors at high and low level on main public routes and will contrast in colour with the walls.
10. Use of colour will be carefully considered to define changes of plane / surface. Colours for door leafs, ironmongery and door frames have been selected to contrast. The same has been applied in respect of walls and floor finishes.
11. An induction loop has been incorporated into reception counters for those with impaired hearing.
12. The vanity areas to the changing spaces have shelving and mirrors set at a height for wheelchair users.
13. A changing places room has been provided with easy access from the changing area to the pool hall.
14. Accessible toilet provision is provided throughout the centre and ambulant disabled toilets
15. Changing lockers: A number of full height changing lockers have been provided in all changing rooms for storage of possessions and mobility aids. These are full height compartments 1800mm high x 300mm wide x 500mm deep. The lockers will be signed for disabled use and have knee space under.
16. Accessible shower and family / disabled changing cubicles.



Blue areas denote accessible Provisions.

Accessibility Requirements - Ground Floor



1. Wheelchair bays provided to spectator seating area with carer seats
2. Fitness suite to incorporate equipment to suit those with disabilities - to be IFI accredited
3. At first floor, all primary escape routes from the building incorporate wheelchair refuges for use in the event of an evacuation and include Evac chairs.
4. Double height handrail and illuminated stair for partially sighted people and people of a smaller stature. Manifestation to glass balustrades to be used to assist guide dogs.
5. Single door widths to most routes are 1-metre width structural openings providing access for wheelchair users and will have vision panels to doors at high and low level on main public routes and automatic door entry where necessary
6. Use of colour will be carefully considered to define changes of plane/surface. Colours for doors, leafs, ironmongery and door frames have been selected to contrast. The same has been applied in respect of wall and floor finishes.
7. The vanity areas within changing areas have shelving and mirrors set at a height to suit wheelchair users.
8. Accessible toilet provision is provided throughout the centre and ambulant disabled toilets.
9. Changing Lockers: A number of full height changing lockers have been provided in all Changing rooms for storage of possessions and mobility aids. These are full height compartments 1800mm high x 300mm wide x 500mm deep. The lockers will be signed for disabled use and have knee space under.
10. Accessible Shower areas to fitness changing spaces
11. 1 x Fully accessible lift to ground and first floor in accordance with Sport England Regulations
12. Accessible height hooks and 600mm deep benches for wheelchair transfer
13. Fully accessible dance studios



Blue areas denote accessible Provisions.

